



# EVVELAND



## Business Metaverse

For corporations, SMBs, entrepreneurs and **business communities** (such as NGOs or chambers of commerce)

## Easy Web3 and AI tools

For immediate monetization by events, NFTs and permanent **smart cubes**

# Index

1. Introduction
2. Index
3. Problems - Solutions
4. Market size
5. Competitors
6. Traction and Use Cases
7. Current Communities
8. Evveland Ecosystem
9. Products Price List
10. Fundraising Strategy
11. Use of Proceeds
12. 3Y Roadmap
13. Team
14. Contact Us
15. Annex: Tokenomics





# Problems

# Solutions

## HIGH WEB3 DEMAND

Communities and businesses are demanding AI and VR experiences for better engagement and monetization



## FOCUS ON COMMUNITIES

Mobile-first and AI enabled business metaverse, with multiple use cases: Retail, Education, Real Estate and more

## EXPENSIVE AND COMPLEX

Current Web3, AI and Metaverse solutions are out of reach for most organizations, due to high price and technical complexities



## IMMEDIATE MONETIZATION

Our venues and smart cubes are affordable, customizable and easy-to-use. Ideal for events, networking and eCommerce solutions

# Market Size

**TAM: +\$6 - \$15 Trillion**



**Metaverse &  
Web3 Market**

**SAM: \$2 - \$3 Trillion**



**SMB Web3 Market**

**SOM: \$6 Billion**



**Evveland Target**

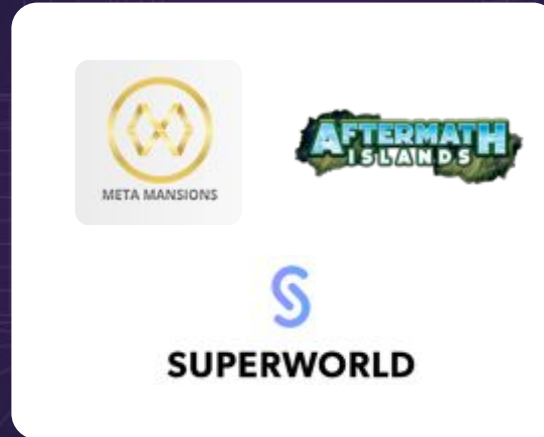
# Competitors

## 3D METAVERSES



- ❖ Poor Experience for Mobile Users
- ❖ Focus on Gaming and Entertainment
- ❖ Large communities, but not professional

## VR METAVERSES



- ❖ Poor Experience for Mobile Users
- ❖ Focus on Real Estate
- ❖ Traditional targets

## VIRTUAL EVENTS



- ❖ Only software, without Metaverse or NFTs
- ❖ Focus on events
- ❖ Without community
- ❖ Weak Strategy and not scalable

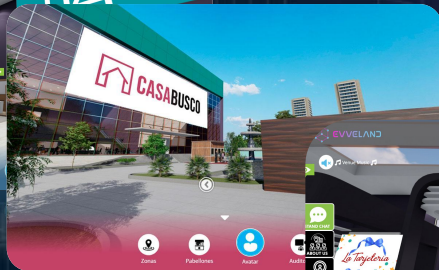


# Use Cases

## FINANCE



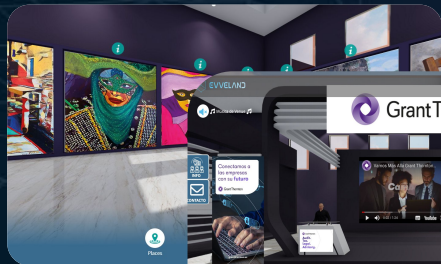
## REAL ESTATE



## RETAIL



## ART



## TECH



## EDUCATION



# Traction

## 1 Year Metrics

Communities Hosted:	18
Companies onboarded:	+500
Registered Users:	+18.000
Unique Visitors:	+25.000
Views:	+70.000

In its first year, Evveland has achieved a solid product/market fit in 14 Countries from 3 Continents, with **7x Engagement** than traditional web

# Some of our Current Communities



## Web3 Stronger Together

**Companies: 150**  
**Users: 1.300**

Business community based in France, with monthly events and Web3 projects



GEORGIA HISPANIC  
CHAMBER of COMMERCE

## Hispanic Business Center

**Companies: 105**  
**Users: 850**

SMBs community based in USA, led by the Georgia Chamber of Commerce, used by the affiliates for marketing and education

Community **4** Experience

## Community4 Experience

**Companies: 32**  
**Users: 150**

Crypto community based in Spain, very active promoting new initiatives and eLearning



## Buskeros Job Fairs

**Companies: +300**  
**Users: +12,000**

Employment Job Fairs for multiple companies in Central America and the Caribbean



# Evveland Ecosystem

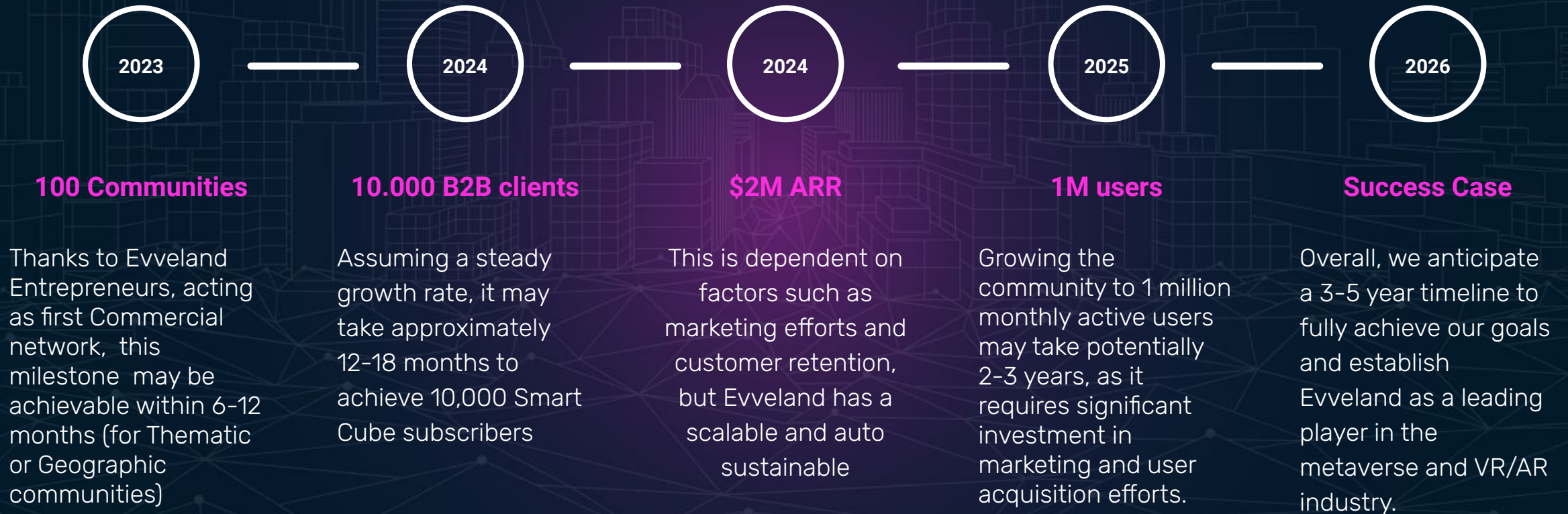




# Products: Price List

<b>Product</b>	<b>Full Price</b>	<b>Period</b>	<b>Discount Price</b>	<b>Free Trial</b>
<b>Pulsar Smart Cube</b>	<b>10€</b>	<b>per month</b>	<b>99€ per year</b>	<b>90 days</b>
<b>Nebula Smart Cube</b>	<b>25€</b>	<b>per month</b>	<b>199€ per year</b>	<b>No</b>
<b>Quasar Smart Cube</b>	<b>35€</b>	<b>per month</b>	<b>239€ per year</b>	<b>No</b>
<b>Stellar Smart Cube</b>	<b>30€</b>	<b>per month</b>	<b>299€ per year</b>	<b>No</b>
<b>Cosmos Smart Cube</b>	<b>50€</b>	<b>per month</b>	<b>529€ per year</b>	<b>No</b>
<b>Nova Smart Cube</b>	<b>75€</b>	<b>per month</b>	<b>599€ per year</b>	<b>No</b>
<b>Metaplaza Rentals</b>	<b>500€</b>	<b>Per day</b>	<b>2000€ / 5 days</b>	<b>No</b>
<b>Turnkey Event Management</b>	<b>from 5000€</b>	<b>Per event</b>	<b>On demand</b>	<b>No</b>
<b>NFT Tickets</b>	<b>From 0.50€</b>	<b>per NFT ticket</b>	<b>On demand</b>	<b>No</b>
<b>NFT Merchandise</b>	<b>From 0.50€</b>	<b>per NFT</b>	<b>On demand</b>	<b>No</b>
<b>NFT Collection Design</b>	<b>From 1.000€</b>	<b>per Collection</b>	<b>On demand</b>	<b>No</b>

# 3Y Roadmap



# Fundraising Strategy

## Equity investor

- ❖ Direct investment in Evveland shares
- ❖ Minimum Ticket \$20.000
- ❖ Cap: \$400.000
- ❖ \$4.6M Pre-money valuation
- ❖ Equity available: 8%
- ❖ Vehicle: SAFE
- ❖ Future Discount: 30%
- ❖ Max Future Equity: 30%
- ❖ Period: 2023 Q4



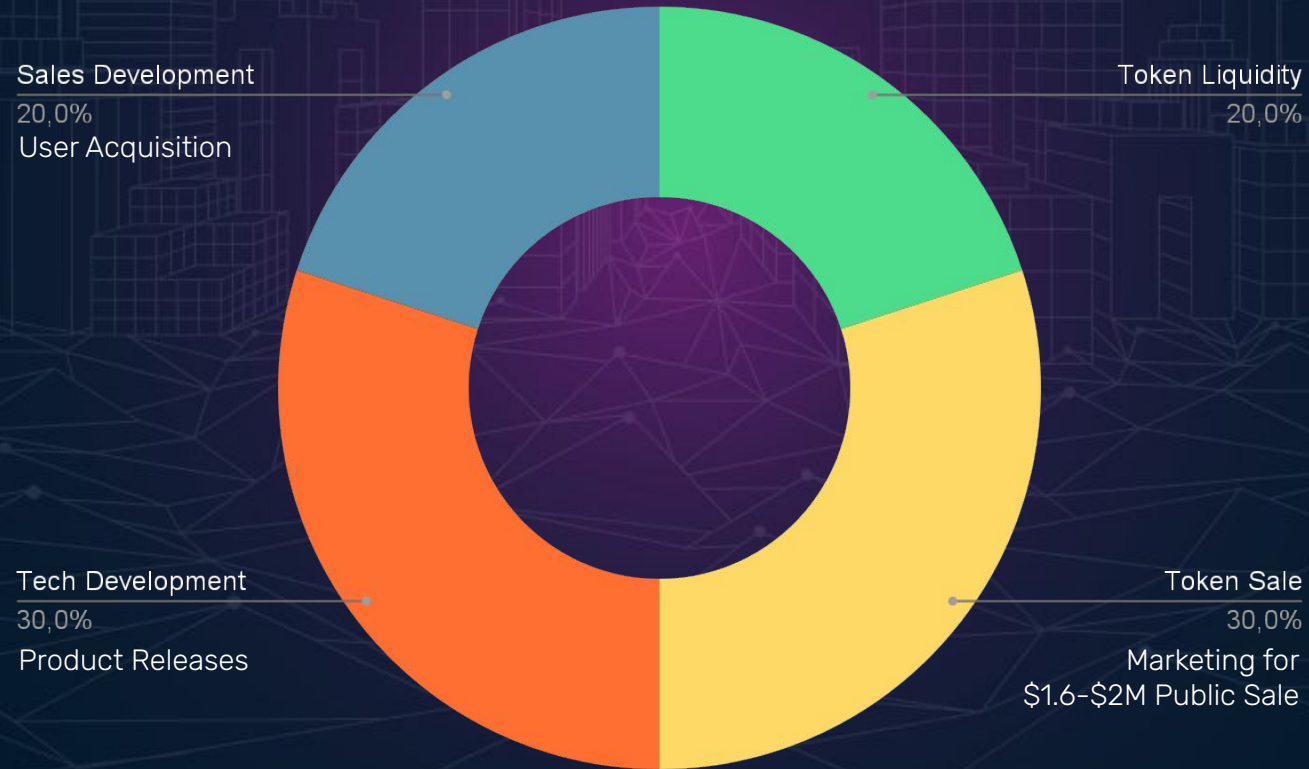
## Token investor

- ❖ Invest in EVVE tokens via Private Sale
- ❖ Minimum Ticket \$400
- ❖ Cap: \$400.000
- ❖ Tokens Supply available: 2%
- ❖ EVVE token listing price: \$0.04\*
- ❖ Private Sale Discount: 50%
- ❖ Terms: 50% cliff 6 months, then the other 50% to be released linearly over the following 12 months
- ❖ Period: 2023 Q4



# Use of Proceeds

We will use the \$800.000 raised to achieve the following milestones:



# Team



**Rafael Bonnelly**  
Founder & CEO



**Ivan Jiménez**  
Co-Founder & COO



**Marta Madina**  
Chief Content Officer



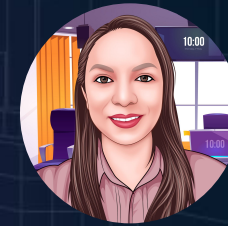
**Ivo Cadenas**  
Chief Revenue Officer



**Jon Osoro**  
Chief Marketing Officer



**Juan Sánchez**  
Chief Technology Officer



**Doris Calero**  
Sales Operations



**Lourdes Sánchez**  
Director of Operations



**Julio Calero**  
DB Admin



**Joshua Hernández**  
Customer Success



**Sunday Mgbogu**  
Sr. Blockchain  
Developer



**Carlos Bernal**  
Social Media  
Manager



**Amelia Vergaray**  
Sr. Frontend  
Developer



**Monaf Rony**  
VR /AR/XR  
Architect

# Contact Us

**Rafael Bonnelly**  
**Founder & CEO**

[rafael@evveland.com](mailto:rafael@evveland.com)

**Ivo Cadenas**  
**CRO**

[ivo@evveland.com](mailto:ivo@evveland.com)



# Annex: Tokenomics

## Why Tokenize? To get liquidity assets!

- ❖ EVVE token is an ERC-20 minted on Polygon Blockchain (using a PoS green protocol) and **already listed** in Uniswap and Cryptopocket
- ❖ **\$1.6M Public Sale** projected for 2024 Q2
- ❖ Well-structured **tokenomics** with long-term vision.

